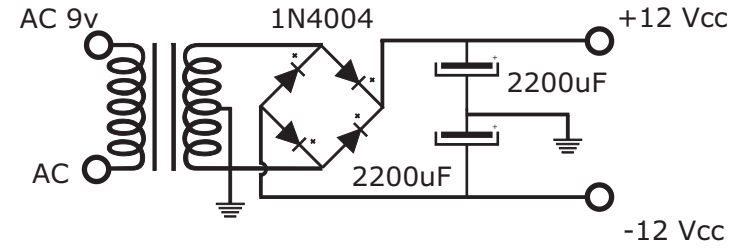
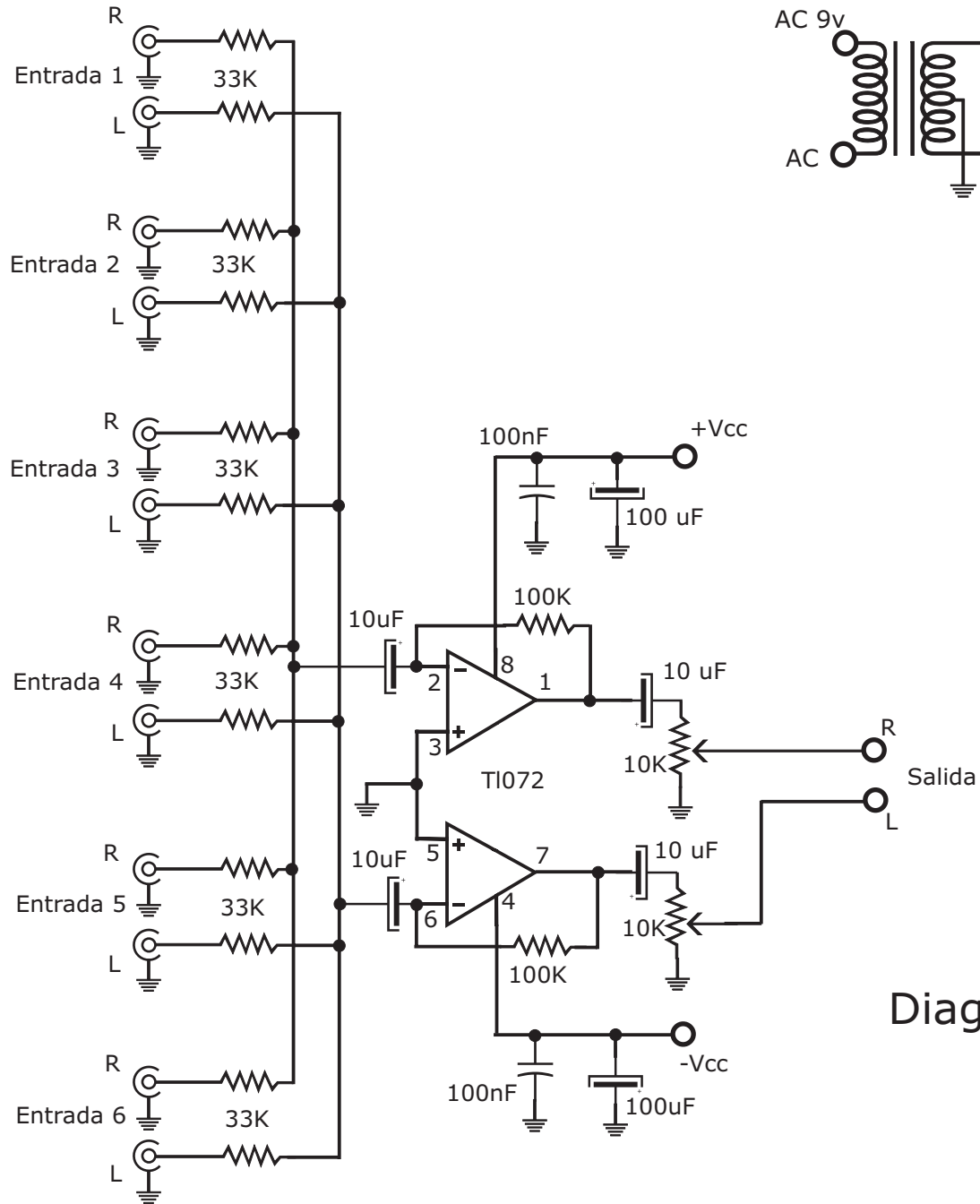


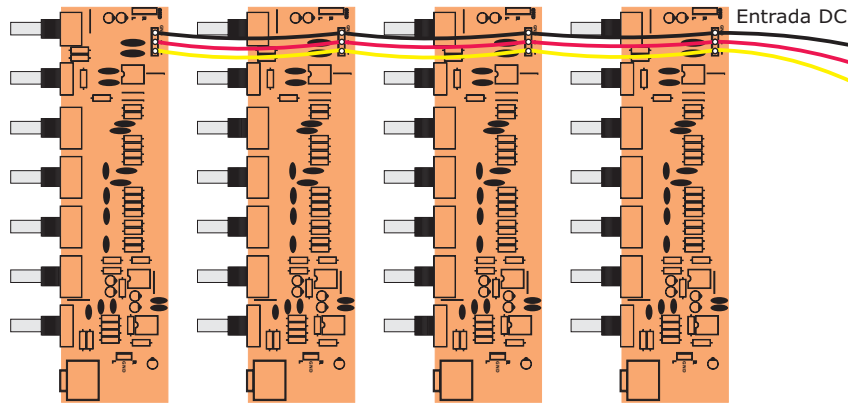
Sumador de señales



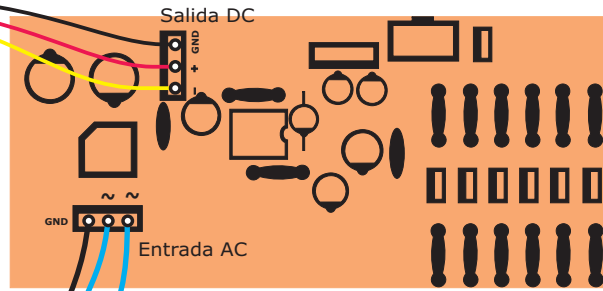
Fuente de alimentación

Diagrama esquemático

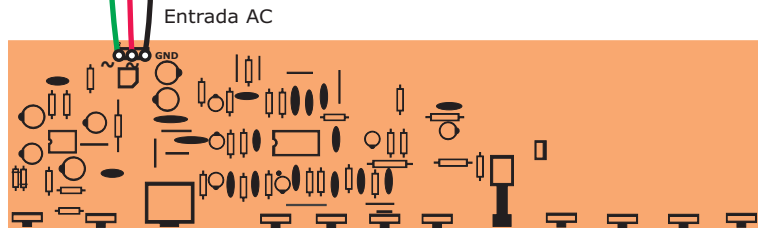
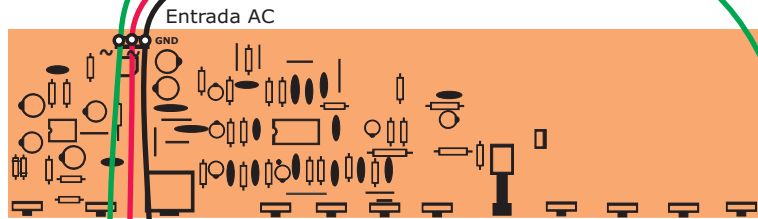
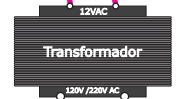
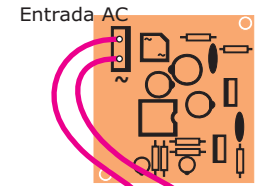
Preamplificadores de micrófono



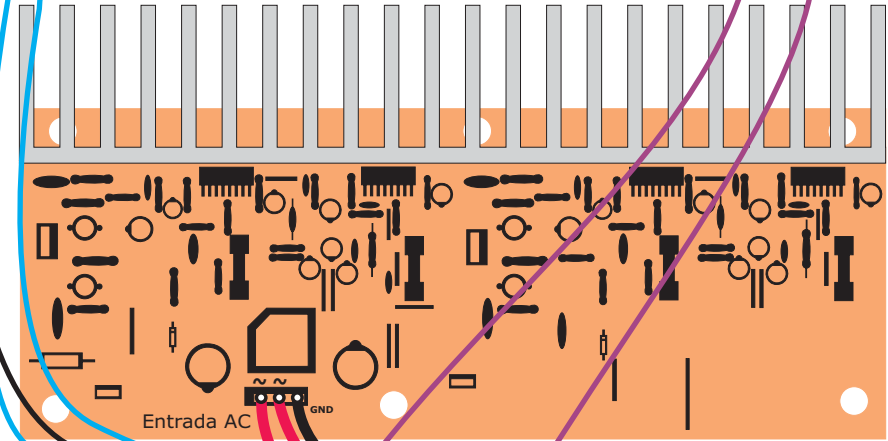
Sumador de señales



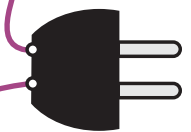
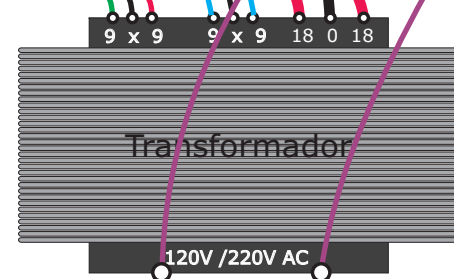
Amplificador de Audífonos



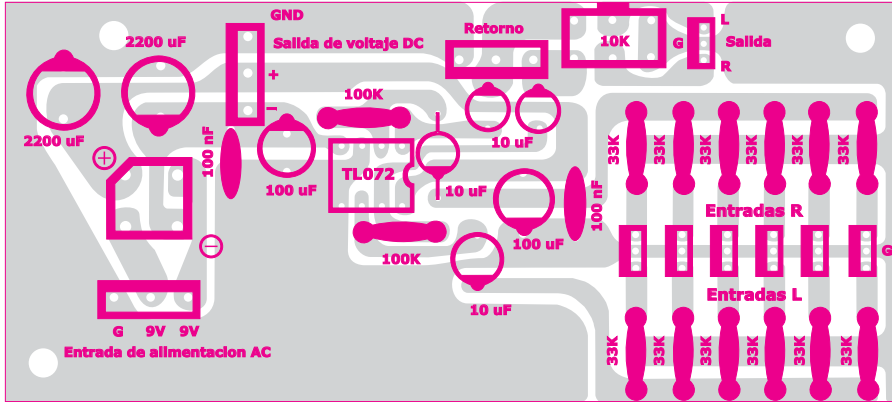
Preamplificadores de Guitarra



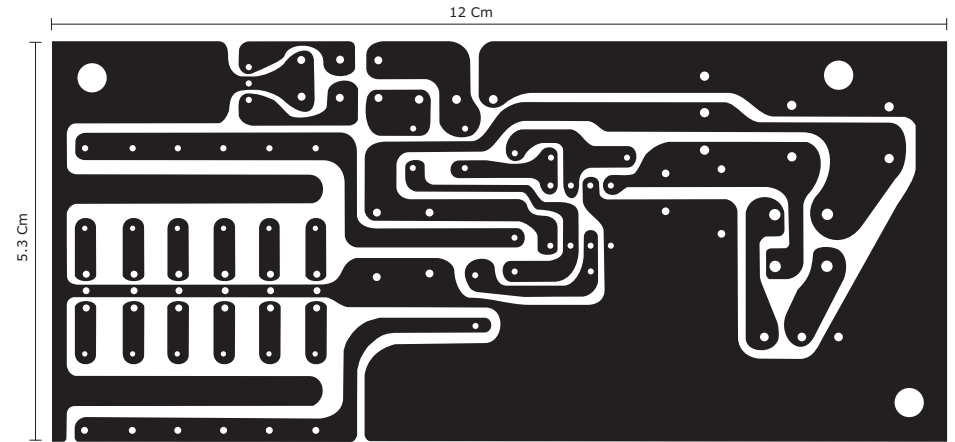
Amplificador



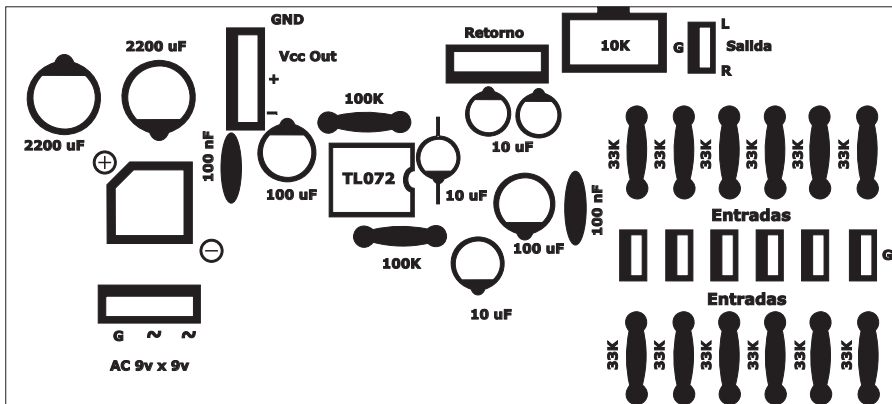
Sumador de señales



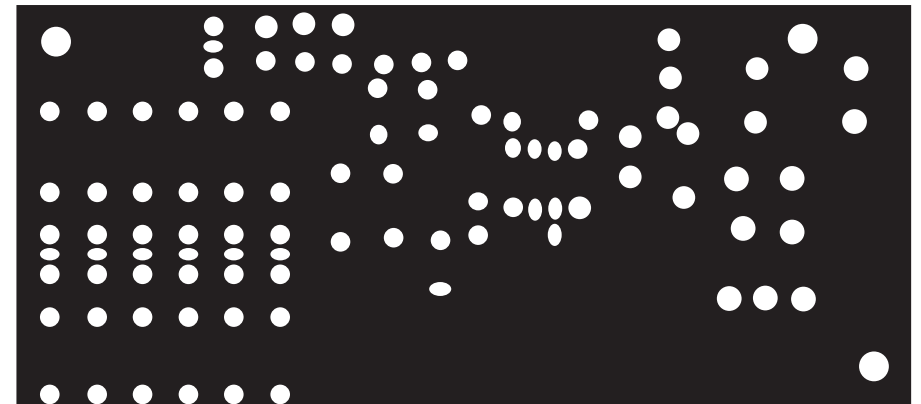
Ubicación de los componentes



Circuito impreso (PCB)



Máscara de componentes



Máscara antisoldante

Sumador de señales

Materiales

Integrados

1 TL072

Resistencias

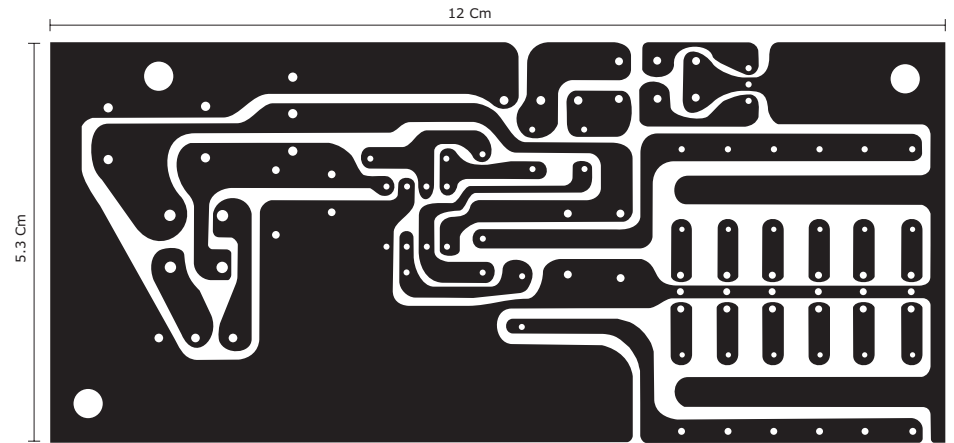
12 Resistencias de 33K (naranja, naranja, naranja)
2 Resistencias de 100K (café, negro, amarillo)

Condensadores

4 Condensadores de 10 μ F / 25v
2 Condensadores de 100 μ F / 25v
2 Condensadores de 100 nF (104)
2 Condensadores de 2200 μ F / 25v

Varios

2 Potenciómetros 10K
1 puente de diodos 1 amperio
1 Transformador de 9x9 voltios a 300 miliamperios



Circuito impreso en modo espejo para planchado

En caso de hacer un amplificador para usar con este sumador, puede construir un devanado adicional en el transformador principal que alimentará el amplificador.